

a charm *life* awaits you...



SUSHEEL
• **ADVAIT** •

Plot No. 532/A, Opp. New Tahsildar Office.

AT PANVEL



breath taking *first* impression...



The Amenities



Ground Floor Entrance Lobby



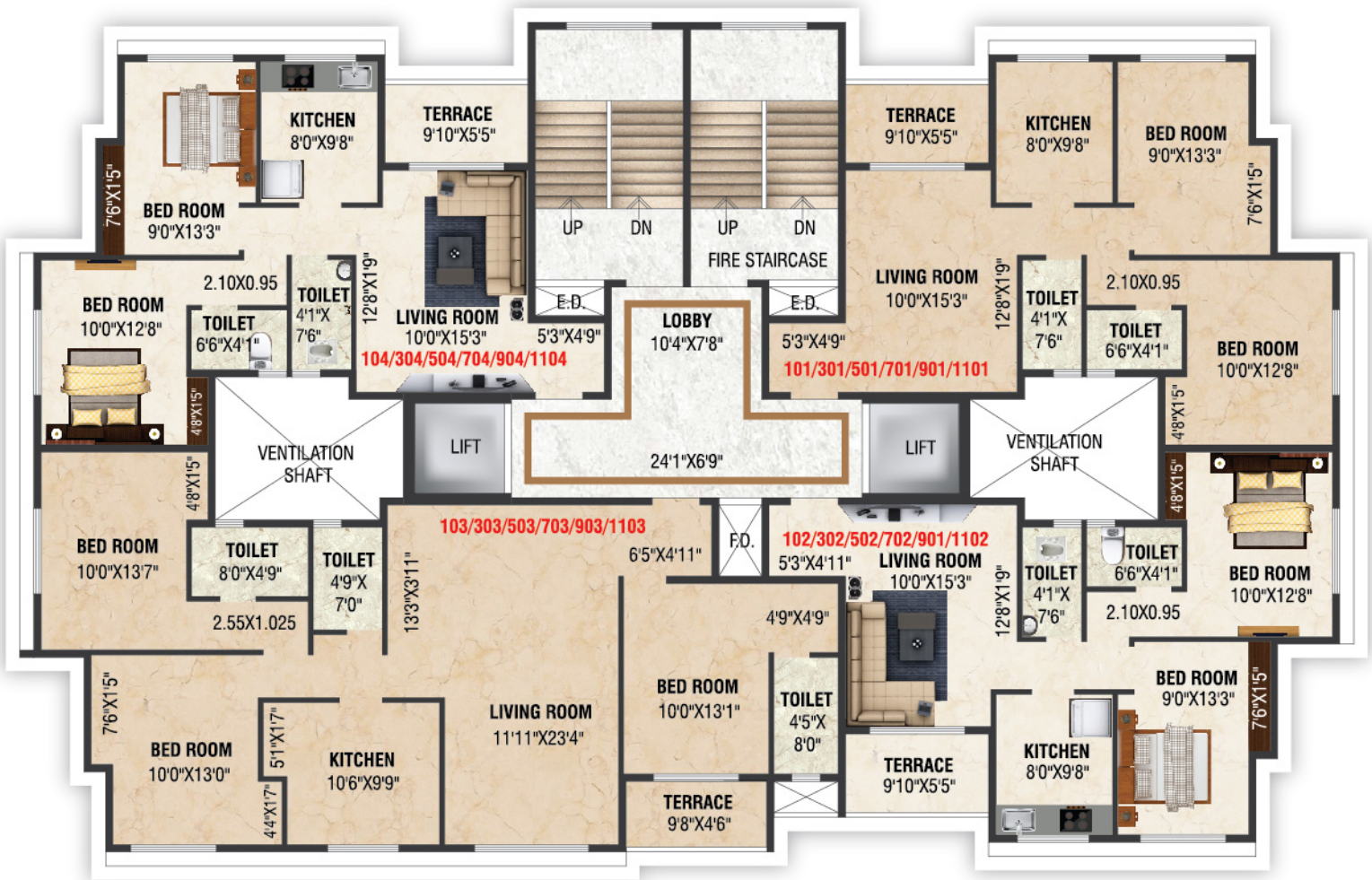
- | Video Door Phone
- | Vitrified Flooring in all rooms
- | Granite Kitchen Platform with SS sink
- | Glazed tiles in toilets upto beam level
- | Putty finish walls with OBD paint
- | Concealed copper wiring with modular switches
- | Concealed plumbing with premium fittings
- | Anodized aluminium sliding windows
- | Designer entrance lobby
- | Decorative main door and internal doors
- | Lift of reputed make with backup inverter
- | Acrylic paint for external walls



Ground Floor Plan

your residence the new *landmark* ...

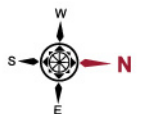




Typical 1st, 3rd, 5th, 7th, 9th & 11th Floor Plan



Typical 2nd, 4th, 6th, 10th & 12th Floor Plan





8th Floor Plan



Site Add : Plot No 532/A, Opp New Tahsildar Office, Panvel



A Project By :



SUSHEEL GROUP

Office : Gr. Floor, 756, Kapad Bazar, Panvel - 410 206

Email: kasatg@yahoo.com

Contact : 9833648242 / 27452321

Architect & RCC Consultants

M/S VASTUKALP

02227450651

MAHA RERA Reg. No. : P52000019295 | MAHA RERA Website : www.maharera.mahaonline.gov.in

The content of this brochure are purely conceptual and have no legal binding on us. Developers reserve the rights to amend the layout plans, number of flats, elevation, colour scheme, specifications and other amenities.